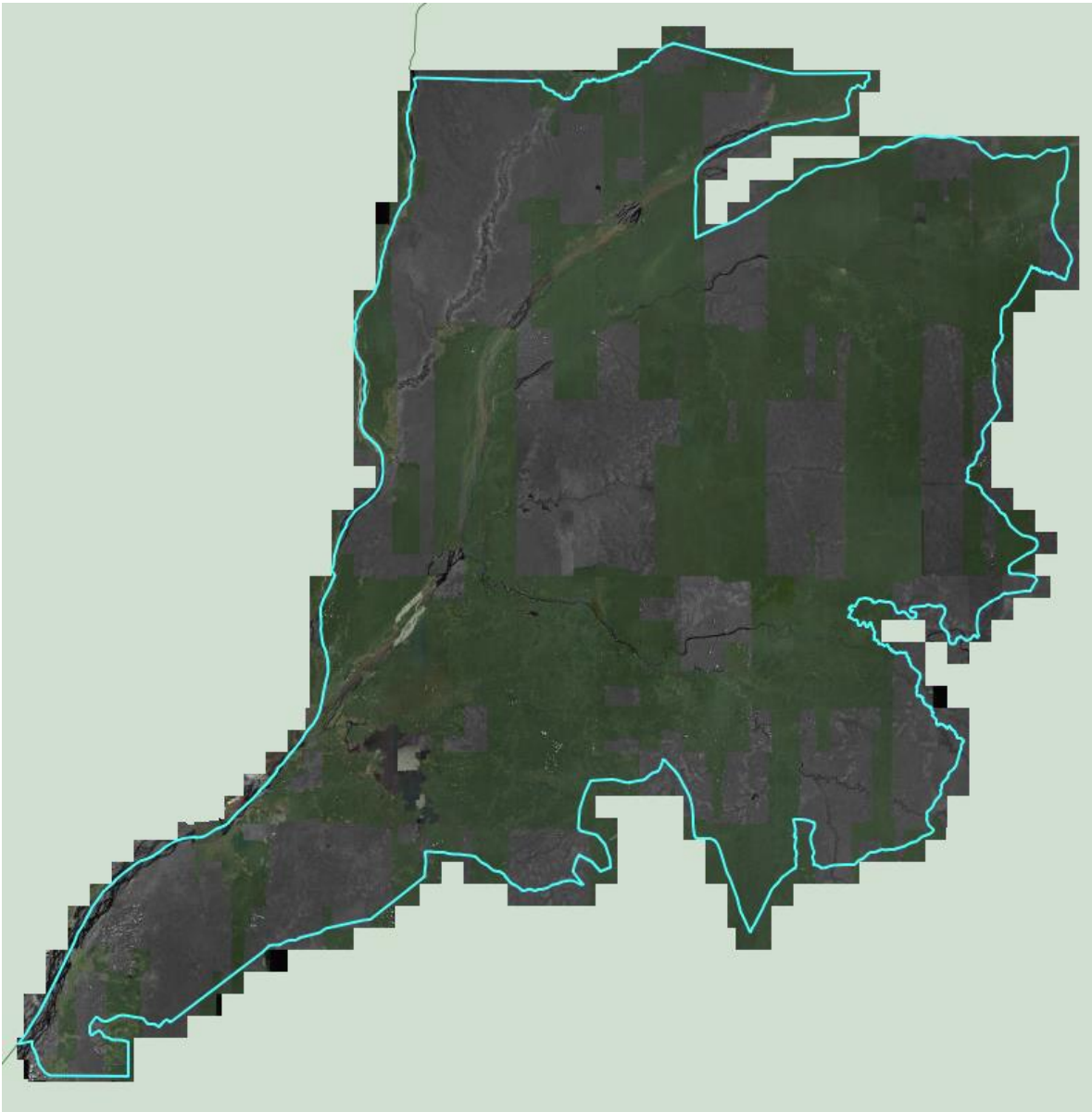


1880: 18Q2_CUSTOM_EquateurProvince_PostFeasibility

[Overview](#)



1 layer

id	Name
470	18Q2_CUSTOM_EquateurProvince/2

Age Profile



Project Metrics

- 31 total partitions (0 passed, 31 unpassed)
- 1984 tiles
- 1211 tile candidates
- 1 layer
- 0 available strips
- 0 strips in current solution
- Area (km²)
 - AOI: 102,006.6
 - Imagery coverage: 114,713.0
 - Imagery coverage within AOI: 102,006.6

Areas are an estimate. Profiles are calculated using simplified geometries of the current solution.

Age Profile

Year	Area (km ²)	Percentage
2017	24,069.9	21.0%
2013	7,221.6	6.3%
2015	31,759.7	27.8%
2016	10,069.0	8.8%
2014	1,990.6	1.7%
2011	5,562.5	4.9%
2012	6,626.3	5.8%
2018	23,448.3	20.5%
2010	1,313.7	1.1%
2009	2,326.3	2.0%
Total	114,387.9	100.0%

